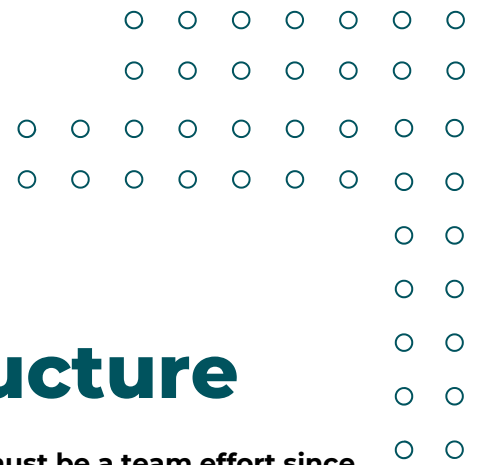


# Discipleship Ministries

## RESOURCE GUIDE





## Vision

Discipleship Ministries (DM) coordinates the spiritual formation ministries of the IPHC. We seek to come alongside local church leaders, families, and individuals as we become more like Jesus. We heed Jesus' call to "make disciples," and we believe that call extends beyond the Sunday morning service into the six days between Sundays. Discipleship Ministries develops resources and provides training opportunities to empower the individual to continue their daily journey as a disciple and a discipler.

## Team Structure

We believe that discipleship must be a team effort since faith formation is a life-long endeavor. We need voices from every area of ministry to truly develop Christ-followers of all ages.

The General level Discipleship Ministries functions as a team with the Executive Director as the team leader. As a team, every member contributes to the vision, strategy, and goals of the ministry. We work to dismantle any silos or separation between our areas of ministry, and instead work to develop resources, training, and networking opportunities for all generations. We encourage every local church to work in a similar team capacity.

If you are interested in receiving training on developing a team strategy within your ministry, contact [discipleship@iphc.org](mailto:discipleship@iphc.org) for more information.

## Discipleship Ministries' Relationship to IPHC Churches

Here are a few guidelines for Discipleship Ministries on the local church level:

- Each church is encouraged to appoint a local Discipleship Ministries director.
- Churches are encouraged to include the Discipleship Ministries director on the Church Board as a full member or with seat and voice.
- The Lead Pastor and Discipleship Ministries director should work closely to coordinate the disciple-making/spiritual formation ministries of the local church.
- The Local Discipleship Ministries director is encouraged to attend all Conference Discipleship events.

# Ministry Specialties

The Discipleship Ministries Division encompasses the following departments/ministries:

Note: While the ministries listed below are all part of the Discipleship Ministries Division on the general level, each Conference and local church has the prerogative of structuring its DM department to best suit its structure and giftings.



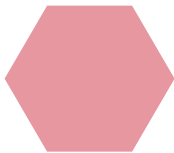
## Adult Ministries

Adult Ministries can include the following areas of ministry: Men's Ministries, Women's Ministries, Older Adult Ministries, and Singles Ministries.



## Student Ministries

Student Ministries can include the following areas of ministry: middle school, high school, college/young adult, Fine Arts Festival, and YouthQuest.



## Children's Ministries

Children's Ministries includes: Family Ministry, Boy's Ministries and Girls' Ministries (mid-week/small group programs) and Kid's Ministries (Sunday morning programs)



## Stewardship Training/Finances

For information and recommended resources on stewarding your finances according to God's Word, go to [iphc.org/discipleship/resources](http://iphc.org/discipleship/resources)



## Sunday School / Systematic Bible Study

Systematic Bible Study (SBS) remains an essential component of disciple-making while providing life application of Bible knowledge and Pentecostal-evangelical theology.



## Worship

Worship, both corporately and individually, is a vital part of the faith journey. Discipleship Ministries provides resources, training, and networking opportunities for those ministering through praise and worship.

For additional information on Discipleship Ministries, contact your Conference Discipleship Ministries office, email [discipleship@iphc.org](mailto:discipleship@iphc.org), visit [iphc.org/discipleship](http://iphc.org/discipleship), or find us on social media [@IPHCdiscipleship](https://www.instagram.com/IPHCdiscipleship).

# Adult Ministries



## Mission

To call men into authentic manhood on their journey of becoming like Jesus, men who reject passivity, accept responsibility, lead courageously, and expect the greater reward, God's reward.

## Vision

To promote a male resurgence within the church that is relational, one life impacting another (Matthew 4:19); transformational, resulting in comprehensive life change (Romans 12:2); missional, meaning the Great Commission is not optional (Matthew 28:19-20); and generational, encouraging every man to be a spiritual parent (2 Timothy 2:2).

## Other ministries

Men's Ministries includes Disaster Relief USA (DRUSA) as a ministry/department.

Men's Ministries has a cooperative relationship with Boys' Ministries.

For additional information, please email [men@iphc.org](mailto:men@iphc.org), visit [iphc.org/men](http://iphc.org/men), or find us on Facebook [@IPHCMen](https://www.facebook.com/IPHCMen)



# Adult Ministries



## Mission

We fulfill our vision by creating opportunities and resources for women to know Jesus, discover their gifts, and be empowered to follow Him with purpose.

## Vision

IPHC Women's Ministries exists to advance Christ's mission in the local church. We partner with conference and local church leaders to inspire, equip, and support women on their journey to become more like Jesus.

## Strategic Goals

Spiritual transformation through relationship with God in prayer and study of His Word.

For women to understand God's purpose for their life.

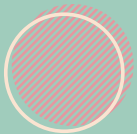
Activating and Mobilizing women to become world changers.

Building community through personal relationships.

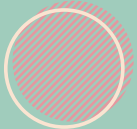
For every church to provide discipleship opportunities for women.

# Women's Ministries

## Resources Offered



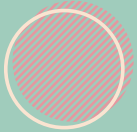
Monthly Newsletter  
(also available in Spanish)



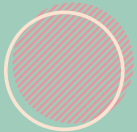
Monthly Gather small group  
resource (also available in Spanish)



Podcast: Gather-Women Better  
Together (website and spotify)



Yearly Virtual Women's  
Conference in March



Leader's Guide for  
women's discipleship

## Special projects

Christmas 4 Missionaries

Vision 4 Education

Harvest Train

For additional information on  
Women's Ministries please email  
[women@iphc.org](mailto:women@iphc.org). All of our  
resources, including the Leader's  
Guide can be found at  
[iphc.org/women](http://iphc.org/women). Find us on  
Facebook and Instagram.

# Student Ministries

## Mission

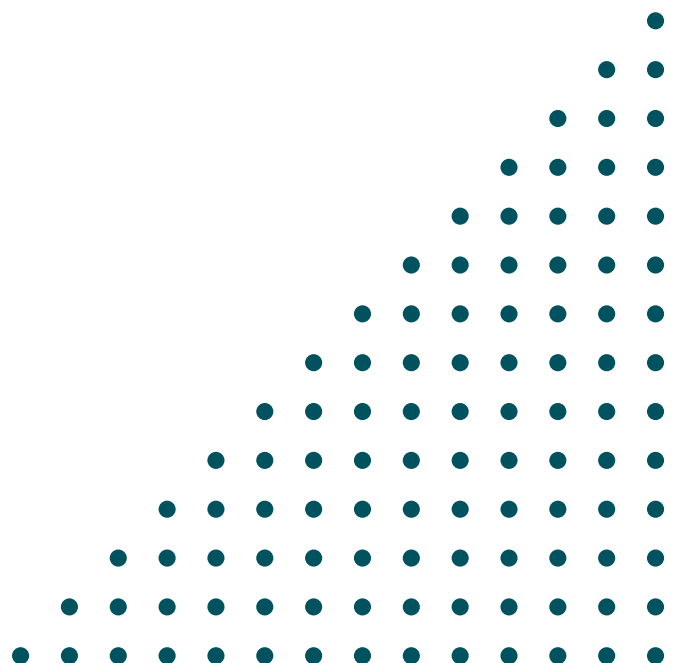
IPHC Student Ministries exists to cultivate a vibrant, Christ-centered community by creating accountable, equipped, and encouraging relationships. Student Ministry leaders represent actively ministering students for grades 6-12 and in college and build relational bridges and initiate experiences using both events and processes in Student Ministries that inspire, equip, and motivate (over and above inspiring) them on their discipling journey activating a sense of accountability to an agreed-upon end.



## Strategy

IPHC Student Ministries exists to build bridges between leaders across barriers by fostering new relational connections between National leaders and Conference leaders, and between National and Conference leaders with local church leaders.

By emphasizing and adapting current connections to become equipping and resourceful relationships, and to develop and maintain accountable relationships.



# Student's Ministries

## - Events for Students -

IPHC Student Ministries initiates experiences that inspire, equip, and motivate students to actively engage in ministry with and to the body of Christ through national events and processes.

### **Accelerant**

IPHC Student Ministries has a strong and supportive relationship with Accelerant, an annual winter discipleship event held in Gatlinburg, TN. The bylaws of Accelerant extend seat, voice and vote to the Executive Director of Discipleship and the Director of Student Ministries, and the leaders of both events work in close harmony to serve and resource the students and leaders of the IPHC.

YouthQuest is a four-day summer youth conference hosted in July by Student Ministries. Each year, students and leaders are challenged to live a life of true discipleship through powerful worship, inspiring speakers, and loads of fun. YouthQuest also encompasses the National Fine Arts Festival and BibleQuest.

### **YouthQuest**

### **\*The National Fine Arts Festival**

The National Fine Arts Festival (formerly known as Teen Talent and TalentQuest) is a student leadership development program designed to help students discover, refine and deploy their God-given gifts and skill-sets in the local church for the Kingdom of God.

BibleQuest is a ministry designed to implant the Word of God in the hearts and lives of young people, empowering them to live victorious lives with the sword of the Spirit, and connecting them with likeminded peers in the study of God's Word.

### **\*BibleQuest**



The national event offers opportunities for students to not only receive input, feedback, and mentoring from seasoned ministry professionals, but also provides national platforms to celebrate those gifts within the greater IPHC family. Local and Conference level competitions precede the national event. Guidelines are developed for the local, Conference, and national events annually and released from the National Discipleship Ministries Department. Call the national Discipleship Ministries office at +1-405-787-7110 or email [students@iphc.org](mailto:students@iphc.org) for dates, deadlines, and details for the current Fine Arts Festival.

# Student's Ministries

## - Events for Leaders -

IPHC Student Ministries initiates experiences that inspire, equip, and motivate Leaders to access the assets and resources available within their ministry peers.

### The HUDDLE

The HUDDLE is an annual one-day training event sponsored by IPHC Student Ministries. Hosted in different cities from year to year, the HUDDLE is designed to deliver quality content from a trusted student ministry professional in an accessible venue on a convenient schedule.

### The SMAT Tour

The Student Ministries Advisory Team is available to conduct conferences, seminars, youth camps, and/or serve as consultants for conferences and local churches.

### CONNECT Young Adult Weekend

Designed for young adults who sense a Divine call to domestic ministry and vocation, Connect is a cohort of leaders who are partnered with seasoned mentors in the IPHC for the sake of training, networking, and ongoing ministry relationships.

### Annual "See You At The Pole" emphasis

Each year, IPHC Student Ministries offers leaders opportunities and resources to encourage students to participate in the nationwide SYATP event every fourth Wednesday in September.

### Annual Pentecost Sunday emphasis

IPHC Student Ministries produces and distributes resources each year in preparation for Pentecost Sunday. These resources are designed to equip leaders at the Conference and local church levels to teach and lead students in learning about the Person and Work of the Holy Spirit.

For additional information on Student Ministries, please email [students@iphc.org](mailto:students@iphc.org), visit [iphc.org/students](http://iphc.org/students), or find us on social media [@IPHCstudent](#)

# Children's Ministries

## Family Ministry

Discipleship Ministries believes that family is a much broader term than the typical family unit of parents and children. Family are the people that do life together, and can include grandparents, single people, blended families, adoptive parents, couples without children, and many others. Family Ministry is a collaborative ministry involving Adult Ministries, Student Ministries, and Children's Ministries. Each ministry provides resources and training for the family through their respective lens

For more information on  
Family Ministry, visit  
[iphc.org/discipleship/family](http://iphc.org/discipleship/family)



The goal of Kids' is primarily to resource church leaders who work with children and families. We also equip parents through training events and social media resources. Our goal is to foster an intentional partnership between parents and the church to raise children with a worldview based on the truth of God's Word. Finally, we aim to be strategic and intentional in the evangelism and discipleship of all IPHC children to see them grow into spiritually mature Christ-followers.



## Vision

The core objective of Boys' Ministries is discipleship – to provide boys with a clear picture of biblical manhood according to the model of Jesus Christ and with a process by which to pursue it. Simply put, providing boys with a picture and a process for Christlike manhood

## Resources

Boy's Ministries recommends Royal Rangers, an activity-based, small-group church ministry for boys and young men in grades K-12 with a mission to evangelize, equip and empower the next generation of Christlike men and lifelong servant leaders. While we believe that this program is flexible and has the ability to meet the needs and interests of ministry to boys, we are also dedicated to providing any assistance or additional resources needed to create a ministry that works for each individual church.

For additional information on Boy's Ministries, please email [boys@iphc.org](mailto:boys@iphc.org), visit [iphc.org/boys](http://iphc.org/boys), or find us on Facebook @IPHCboysministries

## Mission

The primary goal of Girls' Ministries is to partner with conferences and local churches in evangelizing and discipling girls from birth to 12th grade. We do this primarily through resourcing, training, and encouraging Girls' Ministries leaders. We also host a national conference every four years.

## Resources

We recommend the Assemblies of God Girls' Ministry program because of its biblical depth, structure, and Pentecostal foundation. However, we realize this program does not suit every congregation. It is our desire and belief that every church has a dedicated plan for girls' discipleship, so we will assist conferences in developing strategies for their churches.

## Networking

We maintain a cooperative approach with the Women's Ministry based on the idea that girls' ministry happens best in a mentoring environment where Christian women are teaching and training our girls



For additional information on Girl's Ministries or connect with our leaders, please email [girls@iphc.org](mailto:girls@iphc.org), visit [iphc.org/girls](http://iphc.org/girls), or find us on social media @IPHCgirls.



# Stewardship Training/Finances

For information and recommended resources on  
stewarding your finances according to God's Word, go to  
[iphc.org/discipleship/resources](http://iphc.org/discipleship/resources)

## Sunday School/Systematic Bible Study

A list of small group resources is available at [iphc.org/discipleship/resources](http://iphc.org/discipleship/resources). Sunday School curriculum can be ordered from LifeSprings Resources at 1-800-541- 1376 or on their website at [www.lifespringsresources.com](http://www.lifespringsresources.com). Bible Reading Guides provide a strategy for reading the Bible through in a year. Participants can download guides at [iphc.org/discipleship/bible-reading-guides](http://iphc.org/discipleship/bible-reading-guides)

## Worship

Go to [iphc.org/discipleship/resources](http://iphc.org/discipleship/resources) to find  
more information on Worship.

# Training, Events, and Resources

The national DM office partners with Conferences and local churches to provide training on topics such as Discipleship, Men's Ministries, Women's Ministries, Student Ministries, Children's Ministries, Older Adult Ministries, Singles Ministries, and more.

Contact the national office at [discipleship@iphc.org](mailto:discipleship@iphc.org) or 405-792-7152 to schedule a training event.

Resources such as curriculum, book recommendations, events, and other training can be found at [iphc.org/discipleship/resources](http://iphc.org/discipleship/resources)

Summit is a National training event hosted every Fall by Discipleship Ministries for leaders serving in areas of discipleship.

For more information, visit [iphc.org/discipleship/dm-summit](http://iphc.org/discipleship/dm-summit)

# Finances

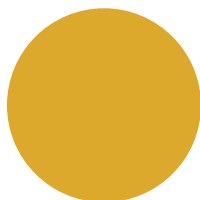


Each local Discipleship Ministries is requested to support the General DM budget as follows:

1 – 50 members	\$1 monthly
51 – 100 members	\$2 monthly
101 – 200 members	\$3 monthly
201+ members	\$4 monthly

These funds are to be sent to the Conference DM Division office and are forwarded to the General DM Division office monthly to support the ministries of discipleship.

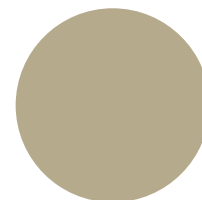
# Church Institutions/Benevolence



## Higher Education

The General Discipleship Ministries offers several scholarship opportunities for local church members interested in attending an IPHC college or university.

**For more information, visit**  
**[iphc.org/discipleship/higher-education](http://iphc.org/discipleship/higher-education)**



## Benevolence

The Executive Director of Discipleship Ministries serves as the liaison to several incorporated ministries of the International Pentecostal Holiness Church. We encourage our local churches to consider sponsoring Falcon Children's Home, Disaster Relief USA (DRUSA), and The Children's Center Rehabilitative Hospital.



# Higher Education

---

## Advantage College

---

Advantage College trains ministers and emerging leaders for effective ministry. A certificate of Theology, an Associate of Theology and Bachelor of Theology degrees are offered. The primary campus is in Modesto, California, with 18 extensions in America and throughout the world. Advantage also offers online and directed studies.

For more information, call (209) 765-9673, or visit the school's website:  
[www.advantagecollege.org](http://www.advantagecollege.org).

---

## Emmanuel College

---

Emmanuel College is a four-year Christian liberal arts institution located in Franklin Springs, Georgia. Emmanuel is fully accredited at the baccalaureate and associate degree levels by the Commission on Colleges of the Southern Association of Colleges and Schools. Emmanuel offers B.S. and B.A. degrees. A comprehensive student life program includes leadership training, drama teams, music groups, summer missions teams, various clubs and organizations, intramural and intercollegiate athletics, multicultural events, concerts, student government, and spiritual growth opportunities.

For more information call 1-800- 860-8800 or check the Emmanuel College website at [www.ec.edu](http://www.ec.edu).

---

## Holmes Bible College

---

As an affiliate institution of the IPHC located in Greenville, South Carolina, Holmes exists for the purpose of training men and women to serve as full-time Christian workers. They combine a complete academic curriculum that provides students with rigorous, quality training for ministry with service, spiritual formation, and social ministry to the community creating a dynamic and practical approach to ministry. Holmes Bible College is a non-profit institution incorporated under the laws of South Carolina as an educational institution that offers Bachelor of Arts, Bachelor of Science, and Associate of Arts degrees. The college is recognized and listed by the United States Office of Education and by the Veterans Administration. It is approved by the United States Department of Justice Immigration and Naturalization Service for attendance of non-immigrant foreign students. Holmes Bible College is a non-profit religious institution operating under the control of a self-perpetuating Board of Trustees. Holmes, true to its founder's vision and purpose, is open to students from various denominations.

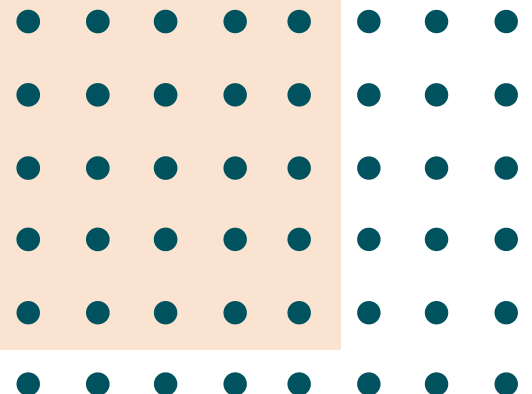
For more information, call (864) 246-3566 or visit their website at [www.holmes.edu](http://www.holmes.edu)

# — Southwestern Christian University —

Southwestern Christian University is a private, four-year Christian university located in the Bethany area of metropolitan Oklahoma City. SCU was founded in 1946 by the International Pentecostal Holiness Church and embraces the Holiness, Pentecostal, and Charismatic traditions. SCU is accredited by the Higher Learning Commission, a Commission of the North Central Association of Colleges and Schools, and is approved by the Oklahoma State Regents for Higher Education to operate as a degree-granting institution of higher education. SCU is approved by the U.S. Citizenship and Immigration Services of the U.S. Department of Homeland Security for the admission of international students and Oklahoma's State Accrediting Agency of the U.S. Department of Veterans Affairs for the admission of eligible veterans.

A growing Christian liberal arts university, Southwestern currently offers an Associate of Arts degree, multiple Bachelors degree options, and a Master of Ministry degree with five areas of concentration. A comprehensive student life program includes intercollegiate athletics (NAIA), music ministry teams, drama teams, missions teams, various clubs and organizations, intramural athletics, student government, concerts, plays, etc.

For additional information call 405-789- 7661, or visit the SCU website at [www.swcu.edu](http://www.swcu.edu).



# Benevolence

## Falcon Children's Home

Located in Falcon, North Carolina; provides residential care to children, based on the specific needs of the child and family, until the child can be reunited with his/her family or placed in a family-type setting.

Royal Home Ministries, formerly known as ATAM, Inc. (Alternative to Abortion Ministries) is under the supervision of Falcon Children's Home. Royal Home Ministries provides group care for unwed mothers, individualized planning for present and future needs of mothers and children, counseling, and structured prenatal and preparation for motherhood classes. The Mothers and Babies program provides after-care for young mothers as well as the new mothers of the Royal Home Ministries. This includes assisting with continued education, finding gainful employment, housing needs and continual care of their children.

The newest service is Falcon Christian Academy, located on the campus of Falcon Children's Home, providing a Christian environment while incorporating the current required curriculum. It includes middle and high school grades. The academy will be able to address the particular needs of the children while providing them a small classroom setting, promoting a more conducive environment for learning.

For more information, call (910) 980-1065, or go to [www.falconchildrenshome.com](http://www.falconchildrenshome.com).

## Disaster Relief USA (DRUSA)

Disaster Relief USA (DRUSA) is a volunteer organization in the International Pentecostal Holiness Church that provides opportunities for individuals, churches, and teams to become involved in compassionate ministry during a disaster. The Disaster Relief USA Handbook provides detailed guidelines for operations at the conference and local church levels.

For more information regarding DRUSA, or to obtain a copy of the DRUSA Handbook, contact [DRUSA at the Global Ministry Center](#), P.O. Box 12609, Oklahoma City, OK 73157, Phone (405) 792-7131; email: [drusa@iphc.org](mailto:drusa@iphc.org).

## The Children's Center Rehabilitative Hospital

Located in Bethany, Oklahoma, TCC is a licensed nonprofit hospital and a leader in pediatric rehabilitation in Oklahoma and in the region. The Children's Center is committed to the sanctity of life and hope for patients and their families.

For more information call (405) 789-6711 or go to [www.tccokc.org](http://www.tccokc.org).

